

# City of Spokane Valley

Washington State Boundary Review Board for Spokane County

May 2002

## New City Summary

- Name of City:  
**City of Spokane Valley**
- Type of Government:  
**Non-Charter Code City**
- Form of Government:  
**Council-Manager**
- Population:  
**80,700**
- Land Area:  
**38 square miles**
- Taxable Assessed Value:  
**\$3,952,562,092**
- 2001 Property Tax:  
**\$6,340,168**
- Per Capita Assessed Value:  
**\$49,102**
- 2001 Estimated Retail Sales:  
**\$42 million**
- 2001 Estimated Sales Tax Revenue:  
**\$14,311,514**
- Incorporation Approved:  
**May 21, 2002**
- Filing Period for Candidates:  
**August 5-9, 2002**
- Filing Fee:  
**\$48.00**
- Residency Requirement:  
**One year prior to election**
- Council Salary:  
**\$400/month**
- Primary Election of City Council:  
**September 17, 2002**
- Election of City Council:  
**November 5, 2002**
- Certification of City Council:  
**November 20, 2002**
- Optimal Incorporation Date:  
**February 28, 2003 or  
March 31, 2003**

The new City of Spokane Valley is bounded on the west by the City of Spokane and on the east by the newly formed City of Liberty Lake. The proposed city's current estimated population is 80,700 and is projected to grow to a population of 89,425 in ten years. The new city boundary encompasses about thirty-eight square miles and its boundary is shown on the map below.

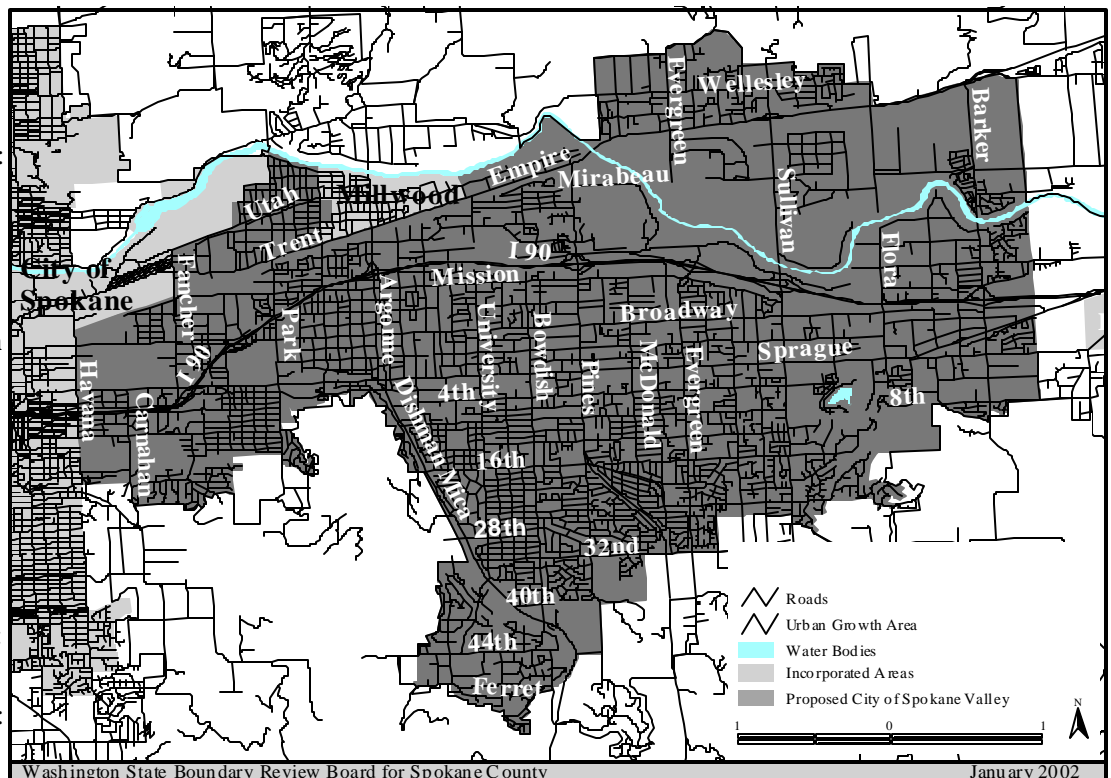


The new city has a mix of urban land uses as well as rural and suburban uses. There are 420 miles of roads in the new city with approximately 60 percent of the new city sewered. It was approved by the voters for incorporation on May 21, 2002.

The next steps for the new city are critical to its long-term success: services must be provided; staff must be hired; an "interim" and first-year budget must be prepared; operating and fiscal policies must be adopted; and a working relationship with special purpose districts, other cities, and Spokane County must be developed. Open public meeting laws apply to the interim city council.

This fact sheet is one resource designed to help facilitate the transition from unincorporated Spokane County to the new City of Spokane Valley.

## New City of Spokane Valley Boundary



January 2002

## ***New City Guide***

A new city must be organized, staffed, and funded to begin official operation between 180 and 360 days after voter approval of the incorporation.

### ***Transition Period***

Even before the new city council is elected, a well-organized and representative transition team can provide much of the groundwork for many of these decisions. To facilitate this process, the Boundary Review Board Office will work with Spokane Valley residents to coordinate a series of forums describing the different aspects of setting up and running a new city.

### ***Interim Period***

The “interim period” refers to the time period between the date of the certification of the results of the election at which the council is chosen and the official date of incorporation, a date which the council will choose. After the date of incorporation, this same council serves as the “interim city council” until council members elected in the next municipal general election in November 2005 take office.

### ***Powers of the Interim Period City Council***

- Adoption of Ordinances and Resolutions
- Adoption of Contracts and Agreements
- Adoption of SEPA Policies and Procedures
- Borrowing Power
  - issue tax or revenue anticipation notes or warrants
  - borrow from the federal, state, and other governments
- Adoption of Property Tax Levy
- Acquisition of City Facilities, Equipment, and Insurance
- Hiring of Staff
- Ballot Propositions to Authorize Taxes
- Fire Protection and/or Library District Annexation
- Adoption of Development Moratoria
- Adoption of Budgets

### ***Official Date of Incorporation***

Choosing the official date of incorporation is basically a process of considering which revenues the new city will receive, and when these will become available. For the City of Spokane Valley, the optimum date appears to be either February 28, 2003 or March 31, 2003. These dates take full advantage of the revenue streams that flow to the new city, allowing time for the adoption of the city’s property tax ordinance, while ensuring County road maintenance responsibility for the maximum time possible after incorporation.

## ***Council-Manager Government***

The City of Spokane Valley will have a council-manager form of government with seven council members, one of which is a mayor that can be either elected by the voters or appointed by the council. The council appoints a person to the position of city manager who serves as the Chief Executive Officer of the city. Appointments of all department heads, officers, and employees are made by the city manager. Two positions must be appointed by the council: City Clerk and Chief Law Enforcement Officer. Legal Counsel must be provided either by contract or appointment. The type of government selected for the new city is classified as a non-charter code city (RCW 35A).

### ***Municipal Services***

When a new city incorporates, it becomes the primary service provider to residents within its boundaries. Critical decisions must be made in the interim period concerning what services the city will initially provide, what level of services will be provided, what services will be provided by contract, and with whom the city will contract for those services. In addition to general government services, a city typically provides services in these areas:

**Public Safety:** The new city is responsible for police and fire protection, animal control, legal counsel, municipal court, probation, prosecutor, public defender, corrections, and jail services.

**Public Works:** Roads administration, construction, and maintenance; water provision, wastewater collection and treatment; stormwater management; solid waste collection and recycling; and building code review, inspection, and enforcement are the responsibility of the new city.

**Parks and Recreation:** Purchase, operation and maintenance of the existing parks and swimming pools would have to be negotiated with the County. The Fairgrounds will continue to be owned and operated by Spokane County.

**Land Use Planning:** The new city will be required to develop a comprehensive plan and development regulations in compliance with the Growth Management Act. The city council in the interim period can impose a moratorium on development permits or approvals within its boundaries. In addition, a hearing examiner, geographic information system, and community development programs are city responsibilities.

For more information, please contact the Boundary Review Board Office at 477-4237 or [brb@spokanecounty.org](mailto:brb@spokanecounty.org) or check the BRB website: [www.spokanecounty.org/boundary](http://www.spokanecounty.org/boundary)