

**CITY OF SAMMAMISH
WASHINGTON
Resolution No. R2001-73**

**A RESOLUTION OF THE CITY OF SAMMAMISH, WASHINGTON, TO
FORM LAKE MANAGEMENT DISTRICT NO. 1 IN THE BEAVER
LAKE WATERSHED AND SETTING A PUBLIC HEARING ON THE
FORMATION OF THE PROPOSED DISTRICT.**

Section 1. WHEREAS, King County completed and adopted, by ordinance, the first lake-specific management plan, the Beaver Lake Management Plan in August of 1995; and

WHEREAS, the Plan was initiated because of citizen interest in the long-term protection of Beaver Lake; and

WHEREAS, Beaver Lake Watershed (Attachment B) contains many significant resources, including three number one-rated wetlands, streams, and lakes; and

WHEREAS, the existing lake quality supports fishing, wildlife habitat, swimming, boating, visual aesthetics, waterfront property values, and other beneficial uses; and

WHEREAS, pursuant to RCW 35.21.403 and RCW Chapter 36.61, a lake management district can be formed to generate funds for financing lake improvement and maintenance projects recommended in the Beaver Lake Management Plan; and

WHEREAS, a notice of intent was adopted per Resolution #2000-57 in November of 2000 and following a public hearing in January of 2001, Council directed staff to work with the Lake Management District to develop a boundary that more closely followed the Beaver Lake Drainage Basin; and

WHEREAS, a revised boundary was submitted to the City and reviewed by the Council's Community Development Committee on April 25, 2001, which also recommends approval of the revised boundary; and

WHEREAS, the City of Sammamish is committed to a good faith effort of continuing these activities; and

WHEREAS, the Beaver Lake community has demonstrated support for the formation of a lake management district through unanimous adoption of a Beaver Lake Community Club resolution and by requesting King County Council to initiate the formation of a Beaver Lake Management District; and

WHEREAS, the hearing and notice requirements of RCW 36.61 will provide an opportunity to evaluate property owner interest in lake management district activities.

NOW THEREFORE, BE IT RESOLVED THAT:

1. The City of Sammamish Council declares, by passing this resolution, its intention to conduct the activities required by RCW 36.61 for the establishment of Lake Management District Number 1 (Beaver Lake) (The "District").
2. The nature of the proposed activities to be undertaken by the District is the continued implementation of the Beaver Lake Management Plan (Attachment A).
3. Special assessments totaling \$40,000 will be collected annually to finance the District activities, with the total amount to be collected during the life of the District being \$200,000
4. The proposed duration of the District is five years from the date such District is actually formed by ordinance.
5. The proposed boundaries of the District are depicted on the attached map and incorporated herein.
6. The proposed rate structure is based on two zones with equal charges for each parcel within a zone. Zone One, comprised of parcels located directly on Beaver Lake, will contribute a total of two-thirds of the Lake Management District revenues. Each parcel will be charged approximately \$200 per year. Zone Two, comprised of parcels not located directly on Beaver Lake, will contribute a total of one-third of the Lake Management District revenues. Each parcel will be charged approximately \$34.26 per year.
7. The resolution so adopted supercedes Resolution #2000-57 of November 15, 2000.
8. A Public Hearing conducted by the City of Sammamish City Council shall be held on the formation of the proposed District:

DATE: June 20, 2001
TIME: 7:30pm or shortly thereafter
PLACE: City of Sammamish City Hall
486 –228th Avenue
Sammamish, WA 98074
9. If Lake Management District Number 1 is formed, the City of Sammamish Council will establish a non-paid Advisory Board of watershed property owners representative of the diversity among property owners within the Beaver Lake watershed to oversee the implementation of the Lake Management District

(LMD) program and to assist the City of Sammamish in establishing annual budgets and work plans for the use of LMD revenues and expenditures. The Advisory Board will meet regularly as determined by the Board, propose annual budgets for LMD expenditures to the City of Sammamish, educate its neighbors on LMD issues, and submit annual reports of LMD activities to the City of Sammamish.

The City of Sammamish Clerk is hereby directed to publish and mail notices as required by RCW 36.61.

**PASSED BY THE CITY COUNCIL OF THE CITY OF SAMMAMISH, WASHINGTON,
ON THIS 16th DAY OF MAY 2001.**

CITY OF SAMMAMISH

Mayor H. Troy Romero

ATTEST/AUTHENTICATED:

Melonie Anderson, City Clerk

Approved as to form:

Bruce L. Disend, City Attorney

Filed with the City Clerk: May 1, 2001
Passed by the City Council: May 16, 2001
Resolution No.: R2001 -73

Beaver Lake Management District Proposal (2001-2005)

As currently proposed, the Beaver Lake Management District will raise \$200,000 between 2001 and 2005 to fund a series of lake management actions. This revenue will be raised through annual assessments of waterfront and non-waterfront property owners in the proposed district boundary.

Waterfront property owners (zone 1 – 120 parcels) will pay \$200 per year while non-waterfront properties (zone 2 – 467 parcels) will be assessed \$34.26 per year. Through these assessments, the district will raise \$40,000 each year for five years total.

This revenue will fund the following activities:

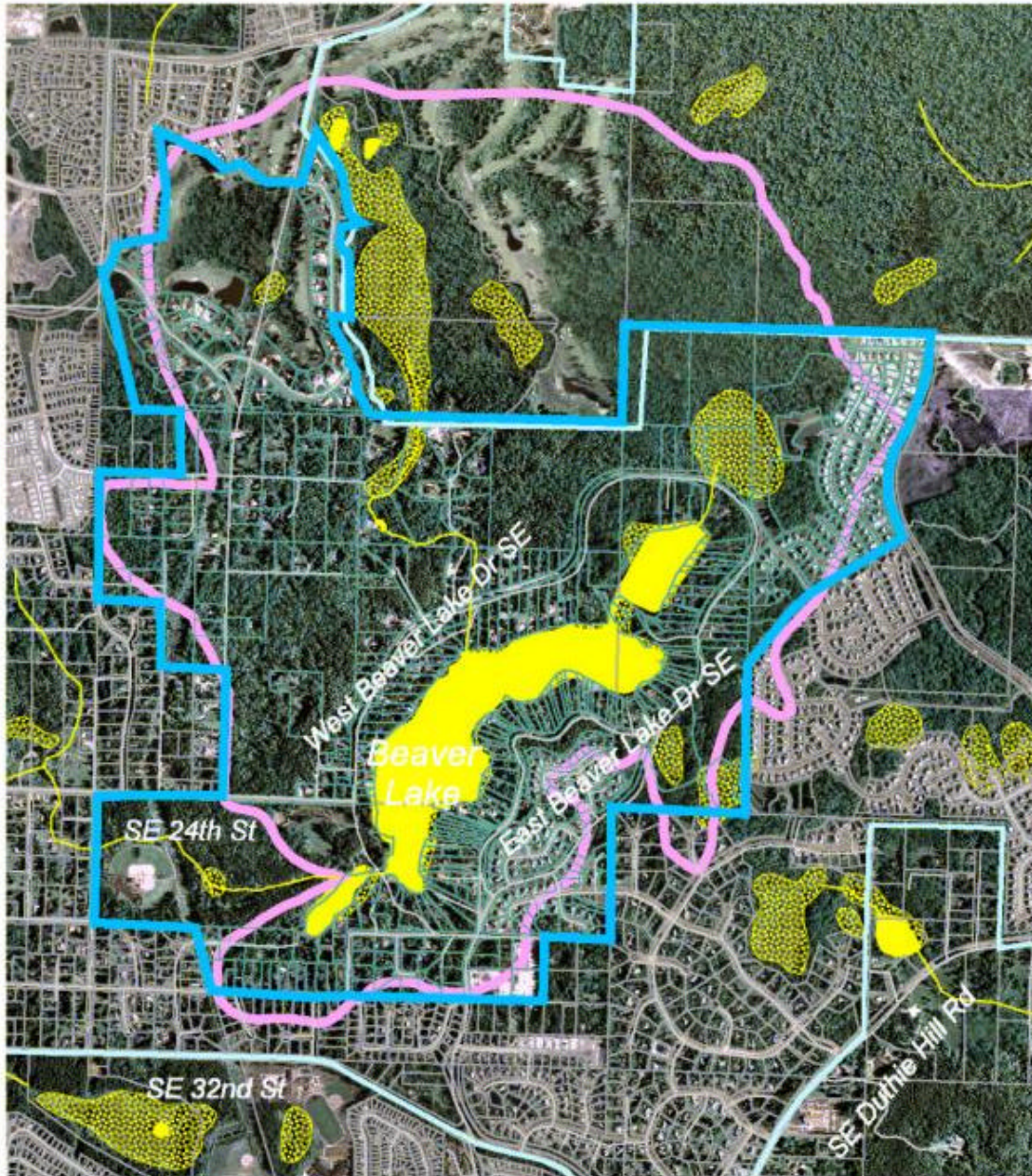
- (1) biweekly stream monitoring; regular stormwater quality sampling to assess new development impacts; and comprehensive lake monitoring in 2005 to evaluate whole-lake water quality;
- (2) semi-annual newsletters and webpage maintenance; and
- (3) administrative support including facilitation of quarterly board meetings and management of work program.

Below is a breakdown of the LMD budget by task with annual revenue.

TASK	2001	2002	2003	2004	2005	Totals
(1) Stream/Lake/ Stormwater Monitoring						
Labor	\$15,759	\$16,675	\$17,653	\$20,354	\$58,864	\$129,304
Lab	\$2,857	\$2,915	\$2,973	\$6,666	\$14,724	\$30,135
Materials	\$1,000		\$1,000		\$1,000	\$3,000
(2) Community Outreach						
Labor	\$4,384	\$4,675	\$4,986	\$5,321	\$5,681	\$25,047
Materials	\$750	\$750	\$750	\$750	\$750	\$3,750
(3) Admin. Support						
Labor	\$2,114	\$2,177	\$2,242	\$2,310	\$2,379	\$11,222
Total Costs	\$26,864	\$27,191	\$29,605	\$35,400	\$83,398	\$202,457
Total Revenue	\$40,000	\$40,000	\$40,000	\$40,000	\$40,000	\$200,000*

*Interest on LMD account should support collection costs plus \$2,457 difference between projected budget and revenue.

Beaver Lake Management District 2001



-  Proposed LMD Boundary
-  Basin Boundary
-  Streams
-  Roads
-  Lakes
-  Wetlands
-  Parcels
-  City of Sammamish
-  LMD Parcels



KING COUNTY
Department of Natural Resources

Map produced by:
King County Lake Stewardship Program
March 2001
Filename: Beaver/arcview/2001lmd.apr

0.2 0 0.2 0.4 0.6 Miles