

## November 2006 - Bonney Lake Response to MRSC Query on Street Lighting

MRSC would like to receive copies of any street light policies developed or modified by other cities over the past 5 years:

How are requests from citizens for additional street lights handled?

Who pays for the street light installation?

When are they denied?

Have you developed any design standards?

Any other information on a policy for the street light installation will be helpful.

---

Bonney Lake has, over the last two years, become very involved in improving our street lighting system.

In July 2005, we formally modified our municipal code as shown by the attached ordinance. Basically, it said street lighting on all public roads was the responsibility of the City. In the past, some Home Owner Associations were paying their own street light bills. We transferred ownership and O&M responsibility from those HOAs to the City in 2005. The ordinance also required that there be a street light at every street intersection. We established a system for ranking missing street lights in order to determine the relative priority of installing these street lights. See two attached documents. Also attached, is a checklist of issues to address when preparing a street light program.

We established a new standard for street lights. They will be placed on black concrete poles with only one type of lamp fixture. Street lights are now required to be built at each intersection by developers. Design Standards are available online at the City of Bonney Lake website by clicking on the Department/Public Works/General Information tabs. Then, double click on the City 2005 design standards to see this document. Detail drawings S15 and S16 show our street light details (excluding the SR410 street lights.)

We established a recurring-annual CIP budget to upgrade our street lighting system.

We have had PSE accomplish a city-wide survey to determine what street lights could be installed-modified cheaply to meet new codes. City Council authorized these low-hanging-fruit type improvements to occur in 2006 and to add the additional O&M costs to our 2007 budget. PSE also prepared a list of other intersections to be improved that required both CIP and an O&M budget. We will phase these improvements in over the next 2-3 years with our new street light CIP budget.

Finally, PSE is preparing a lighting plan for SR410 where it is within the City Limits. This plan will result in constant illumination along SR410 instead of only at intersections. We anticipate funding this project in 2008.

Lessons Learned:

Have PSE design and install all new street lights and installations funded by the City. It is much cheaper. Also, PSE can get the street lights installed quicker than contractors.

Additional street lights can be requested by citizens. These are commonly referred to as mid-block street lights. Normally, they will be added to the backlog of new street light installations as a low priority, unless the police confirm there is a significant safety issue at this location.

Installation of street lights for the purpose of security is given a low priority because street lights only have a limited impact on security. The best solution is for residents and businesses to install their own lights around their properties.

New street lights are denied if they are too close to existing street lights. Generally, only one mid-block street light is allowed per block. It is located on a property line as close as possible to the mid point of the block, regardless of where the requestor wants it to be.

New street lights installed in an area where there are already street lights will match the style of the existing street lights. This will avoid having one street light meeting the new code but looking odd because it is the only one like it in an area.



## **Public Works Department**

### Proposed Street Light Location Criteria:

1. Police Recommendation / Accident Frequency / Safety Concerns
2. SR 410 / Minor Arterial / Collectors / Lights adjacent to public parks, PSB, Schools, Medical Facilities
3. Local Access Road Intersections
4. Cul de Sacs, Dead Ends, Apex of Sharp Curves, 90 degree turns, Replace lights not to current code



**Memorandum From**  
Daniel L. Grigsby, P.E.  
Director, Public Works Department

20 May 2005

Topic: Street Light Policy Development

To:  
Copy To:

Enclosure:

- (1) RCW 82.02.050 Authorization to collect impact fees
- (2) RCW 82.02.090 Definition of impact fee use

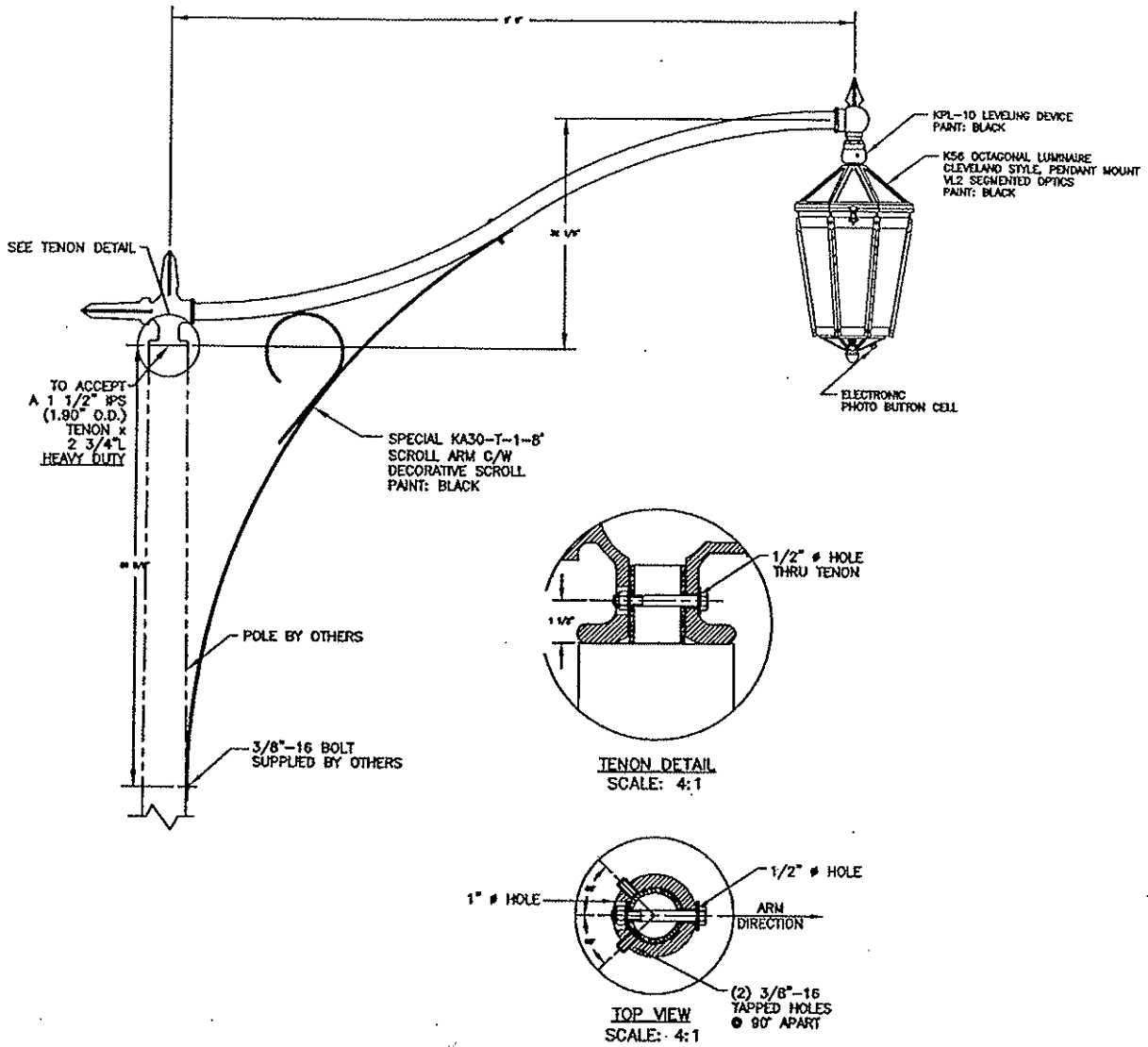
Issues to Address Include:

1. **New development, long plats, short plats.** Install street lights IAW Public Works Design Standards at every intersection and at the end of cul-de-sacs and dead end roads.
2. **Privately Owned street lights on public streets** to be transferred to City ownership with maintenance and operation responsibility.
  - Only if street lights comply with current City Standards?
  - Only if there is a transfer of ROW for trails or parcel ownership for .75 acre or larger property to be used for a park?
  - In all cases if on a public street?
3. **Existing Public Streets.** Need to have a street light on each corner and at end of all dead-end streets and cul-de-sacs.
  - How many need to be built?
  - What period of time should these installations occur over; OR, say \$X per year until all are done?
4. **Street Light Data Base.**
  - Map showing all public/private street lights in City limits and in UGAs
  - Table indicating details on each street light (style, ownership, monthly rate, I.D. number, lumens, etc...)
5. **Funding source for street light Construction:**
  - New Development, Short Plats, etc: Developer/Builder responsibility.
  - Existing Intersections, Cul-de-sacs, dead end streets: City's responsibility.

- When to use Traffic Impact Fee (TIF) or General Fund/Street Fund budgets.
  - a. TIF - When roads are widened or newly constructed AND are part of the City CFP due to development or growth
  - b. General Fund – When existing intersections and dead end/cul-de-sacs are missing the lights

**6. Funding source for maintenance and operation costs:**

- On public-dedicated streets: City's responsibilities
- On private streets: Private association's responsibility
- On private or public property: Property owner's responsibility



**LUMINAIRE SPECIFICATIONS**

CATALOGUE NO.: K56-C-P-SAR-III-250(MOG)  
 --HPS-120-KPL10-PEC-BK-PSE  
 LANTERN STYLE: CLEVELAND  
 POLE ADAPTOR: PENDANT  
 OPTICAL SYSTEM: SEGMENTED ACRYLIC RIPPLED  
 IES CLASS.: TYPE III  
 LIGHT SOURCE: HIGH PRESSURE SODIUM  
 LINE VOLTAGE: 120V  
 PAINT: BLACK  
 OPTIONS: KPL-10 LEVELING DEVICE  
 ELECTRONIC PHOTO BUTTON CELL

QUICK DISCONNECT  }  
 TERMINAL BLOCK  } PLEASE SELECT ONE

**BALLAST INFORMATION:**


BALLAST TYPE: CWA  
 BALLAST MANU.: ADVANCE / MAGNETEK  
 CATALOG NUMBER: 71A8291 / S250MLTAC4M

**ARM SPECIFICATIONS**

CATALOGUE NO.: KA30-T-1-8"  
 MAT'L: ALUMINUM  
 PAINT: BLACK

TENON DETAIL  
 SCALE: 4:1

TOP VIEW  
 SCALE: 4:1

 <b>KING LUMINAIRE</b> COMPANY INC. 640 WALKER'S LINE, P.O. BOX 7, BURLINGTON, ONTARIO, CANADA L7R 3J0 P.O. BOX 266 JEFFERSON, OHIO 1153 STATE ROUTE 46N U.S.A. 44047			
DRAWING NAME: CONCEPT DWG	DWG NUMBER 206A2914-1	DATE: 05/05/05	DWG BY: REV. A.A.
PROJECT/CUSTOMER: PSE -- BONNEY LAKE			CHK BY:
VDWGS\206A2914			

Approved: 

City Engineer

6-17-05  
 Date

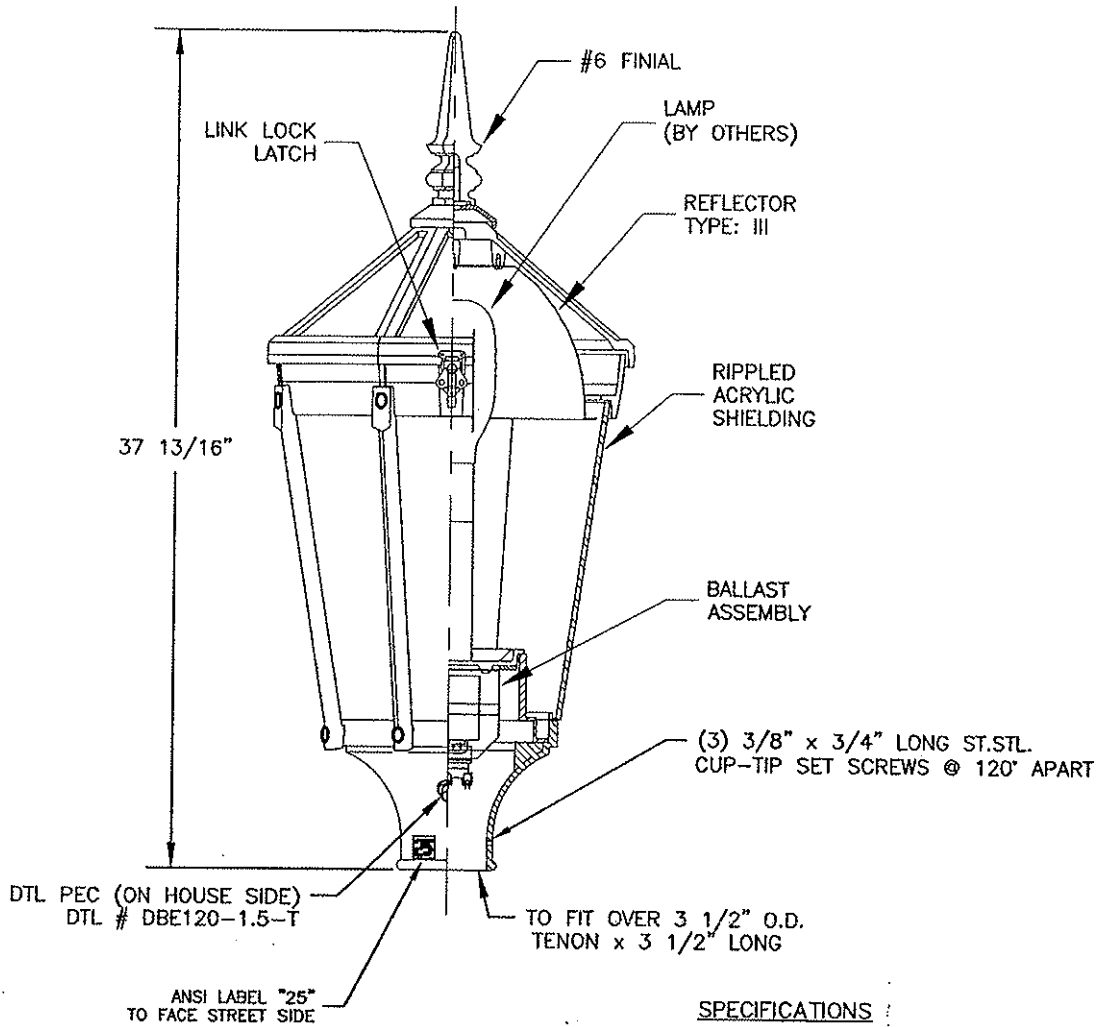
**STREET STANDARD DETAIL**



Dwg No:

**S15**

**KING LUMINAIRE**



**OPTIONS:**

- QUICK DISCONNECT
- TERMINAL BLOCK

OTHER: DTL ELECTRONIC PHOTO BUTTON CELL

FOR WIRING DIAGRAM SEE DRAWING T.B.A.

**SPECIFICATIONS :**


CATALOGUE NO.: K56-C-T-SAR-III-250(MOG)  
-HPS-120-PEC-BK-PSE

QUANTITY:  
LANTERN TYPE: CLEVELAND  
POLE ADAPTOR: 3-1/2" O.D. SLIPFITTER  
OPTICAL SYSTEM: SEGMENTED ACRYLIC RIPPLED  
IES LTG. CLASS.: TYPE III  
WATTAGE: 250W  
SOCKET TYPE: MOGUL  
LIGHT SOURCE: HIGH PRESSURE SODIUM  
LINE VOLTAGE: 120V  
PAINT: BLACK  
LAMP BY OTHERS

**BALLAST INFORMATION:**

BALLAST TYPE: CWA  
BALLAST MANU.: ADVANCE / MAGNETEK  
CATALOG NUMBER: 71A8291 / S250MLTAC4M

PART	PLANT REFERENCE DWG. #s	REVISION
GLOBE		
CAPITAL		
OPTICS		
BALLAST		
FINIAL		
OTHERS		

 <b>KING LUMINAIRE</b> <small>COMPANY INC.</small>				
<small>840 WALKER'S LINE, P.O. BOX 7, BURLINGTON, ONTARIO, CANADA L7R 3Y9</small>		<small>P.O. BOX 288 JEFFERSON, OHIO 1133 STATE ROUTE 404 U.S.A. 44047</small>		
DRAWING NAME: CONCEPT DWG	DWG NUMBER: 206A2914-2	DATE: 05/05/05	DWG BY: A.A.	REV.
PROJECT/CUSTOMER: PSE - BONNEY LAKE				CHK. BY

CERT. I.D. CS  ET

\\DWGS\206A2914

Approved:

City Engineer

STREET STANDARD DETAIL

*6-17-05*  
Date



Dwg No:

**S15**

**KING LUMINAIRE**

**SPECIFICATIONS**

CATALOGUE NO.: K56-C-P-SAR-III-250(MOG)  
-HPS-120-KPL10-PEC-BK-PSE

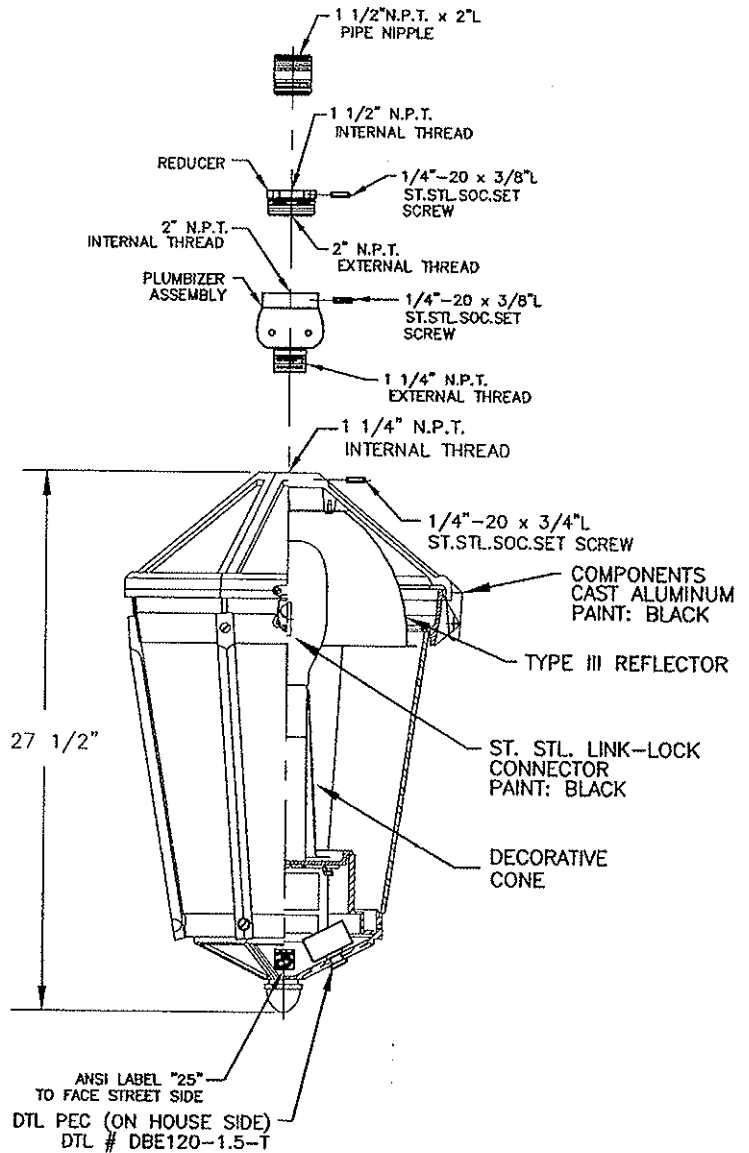
QUANTITY:  
GLOBE MAT'L: ACRYLIC  
IES CLASSIFIC.: TYPE III  
WATTAGE: 250W  
LIGHT SOURCE: HIGH PRESSURE SODIUM  
LINE VOLTAGE: 120V  
PAINT: BLACK  
LAMP BY OTHERS

**BALLAST INFORMATION:**

BALLAST TYPE: CWA  
BALLAST MANUFACTURER: ADVANCE / MAGNETEK  
CATALOG NUMBER: 71A8291 / S250MLTAC4M

**OPTIONS:**

- QUICK DISCONNECT   
 TERMINAL BLOCK   
 OTHER: KPL-10 LEVELING DEVICE  
 DTL ELECTRONIC PHOTO BUTTON CELL



PART	PLANT REFERENCE DWG. #'s	REVISION
GLOBE		
CAPITAL		
OPTICS		
BALLAST		
FINIAL		
OTHERS		
CERT. I.D. CS <input type="checkbox"/> ET <input type="checkbox"/>		

**KING LUMINAIRE**  
COMPANY INC.

540 WILSON'S LANE, P.O. BOX 71, BRUNELTON, ONTARIO, CANADA L7R 3G9  
 P.O. BOX 288 JEFFERSON OHIO 43131 STATE ROUTE 48N U.S.A. 44007

DRAWING NAME: CONCEPT DWG	DWG NUMBER 206A2914-3	DATE: 05/05/05	DWG BY: A.A.	REV.
PROJECT/CUSTOMER: PSE - BONNEY LAKE				CHK BY

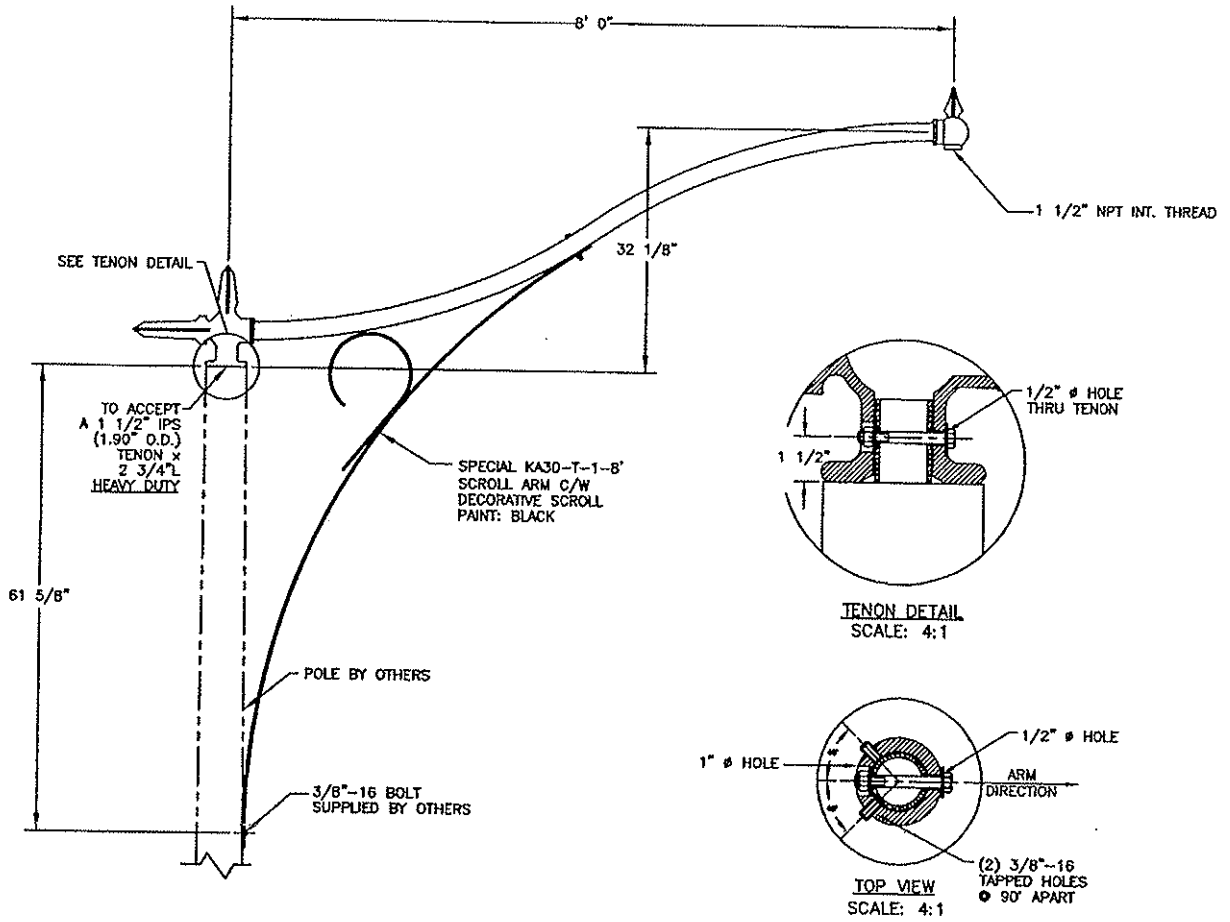
VDWGS\206A2914

Approved:   
 City Engineer Date: 6.17.05  
**STREET STANDARD DETAIL**




Dwg No: **S15**  
**KING LUMINAIRE**





**ARM SPECIFICATIONS**

CATALOGUE NO.: KA30-T-1-8'  
 MAT'L: ALUMINUM  
 PAINT: BLACK

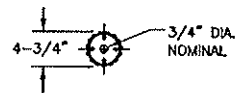
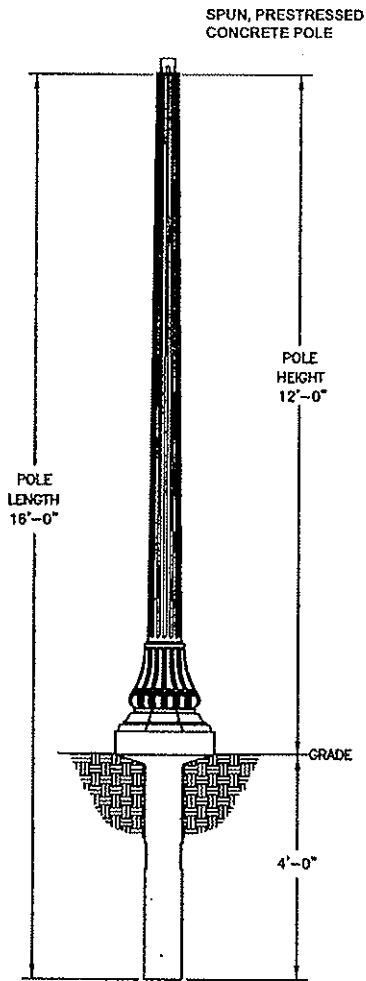
 <b>KING LUMINAIRE</b> COMPANY INC.			
840 WALKER'S LINE, P.O. BOX 7, BURLINGTON, ONTARIO, CANADA L7R 3Y9		P.O. BOX 266 JEFFERSON, OHIO 1153 STATE ROUTE 46H U.S.A. 44047	
DRAWING NAME: CONCEPT DWG	DWG NUMBER 206A2914-4	DATE: 05/12/05	DWG BY: REV. M.L.
PROJECT/CUSTOMER: PSE - BONNEY LAKE			CHK BY:
\DWGS\206A2914			

4 OF 4

Approved:  6-17-05  
 City Engineer Date  
**STREET STANDARD DETAIL**



Dwg No: **S15**  
**KING LUMINAIRE**



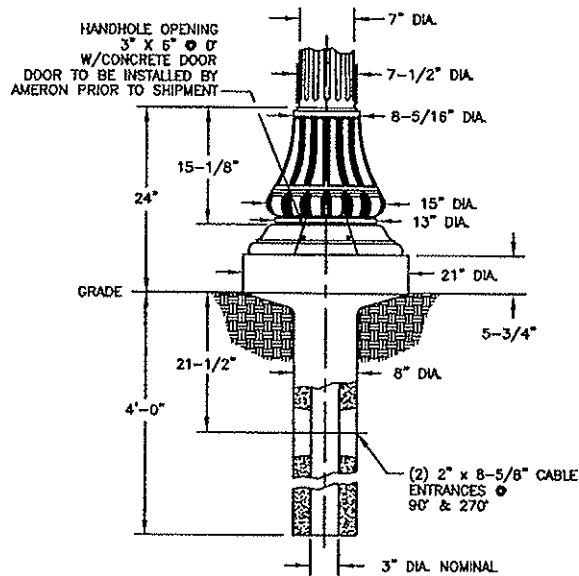
CAST ALUMINUM AS TENON  
ALUMINUM ALLOY 356-T6  
(P/N# 40075EPAA)  
PAINTED S.G. BLACK "PA"  
TENON TO BE INSTALLED BY  
AMERON PRIOR TO SHIPMENT

(4) 3/8"-16UNC x 1-1/2" L.G.  
S.S.TL. FLAT HEAD SCREWS  
ON 3-1/2" DIA. B.C.  
(MOD-38)

(4) 3/8"-16UNC x 1-3/4"  
L.G. COUPLINGS

(4) 3/8"-16UNC x 12" L.G.  
ANCHOR RODS

TOP MOUNT DETAIL



BASE DETAIL



HAND HOLE  
POLE ORIENTATIONS

26ET- TRADITIONAL SERIES EMBEDDED WASHINGTON POLE

POLE DESIGNATION	POLE HEIGHT ABOVE GROUND	EM-BEDDED DEPTH	OVER-ALL LENGTH	BUTT DIA	ULTIMATE G.L. MOMENT (ft.-lbs.)	WEIGHT (lbs.)
26ET-12	12'-0"	4'-0"	16'-0"	21"	7,500	740

( ) POLES REQD, EACH WITH AS TENON (3"O.D. x 3"L; SEE P/N# 40075EPAA).

NOTES:

- FIL MIX (12): BLACK/BLACK, EXPOSED AGGREGATE FINISH, WITH AMERSHIELD ANTI-GRAFFITI COATING.
- ASTM C-150 TYPE III GRAY CEMENT.
- Fc @ 28 DAYS = 6,000 PSI, USING SPUN CYLINDER TEST (MIN.).
- Fc @ 28 DAYS = 5,000 PSI, USING ASTM C-31 CYLINDER TEST.
- POLES MANUFACTURED PER ASTM C1089-97 SPECIFICATIONS.
- PROTECTIVE COAT EXPOSED P.C. WIRES AT POLE ENDS.
- FIL MFG: PRESTRESSED WITH (4) 5/16" DIA. A-416 PRESTRESS CABLES (7-STRAND).
- MOD 38: (4) 3/8"-16UNC TOP MT CPLNGS/ANCHORS ON A 3-1/2" B.C.
- ALL EXPOSED METAL PAINTED SEMI-GLOSS BLACK (PA).

**Ameron** POLE PRODUCTS & SYSTEMS

BONNEY LAKE- WA  
26ET-12 POLE WITH TENON

THIS DOCUMENT CONTAINS INFORMATION WHICH IS PROPRIETARY TO AMERON. IT SHALL NOT BE REPRODUCED, USED OR DISCLOSED TO ANYONE WITHOUT THE PRIOR WRITTEN PERMISSION OF AMERON.

DRAWN: J.C.	5/05	SCALE	DWG. NO.	REV
CHK'D:		N.T.S.	SK053505	A

Approved:

City Engineer

6-17-07  
Date

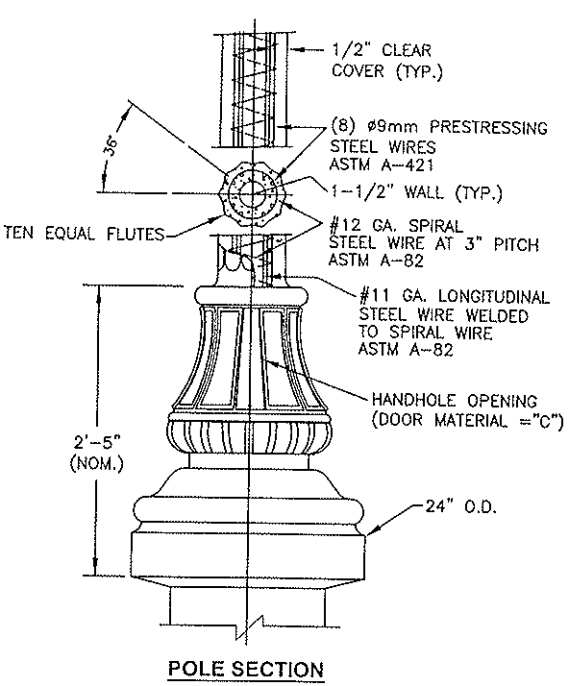
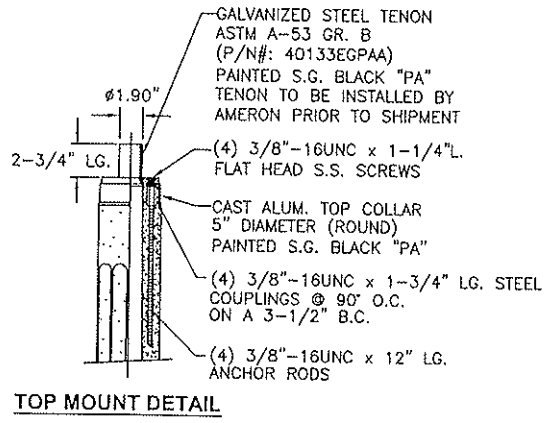
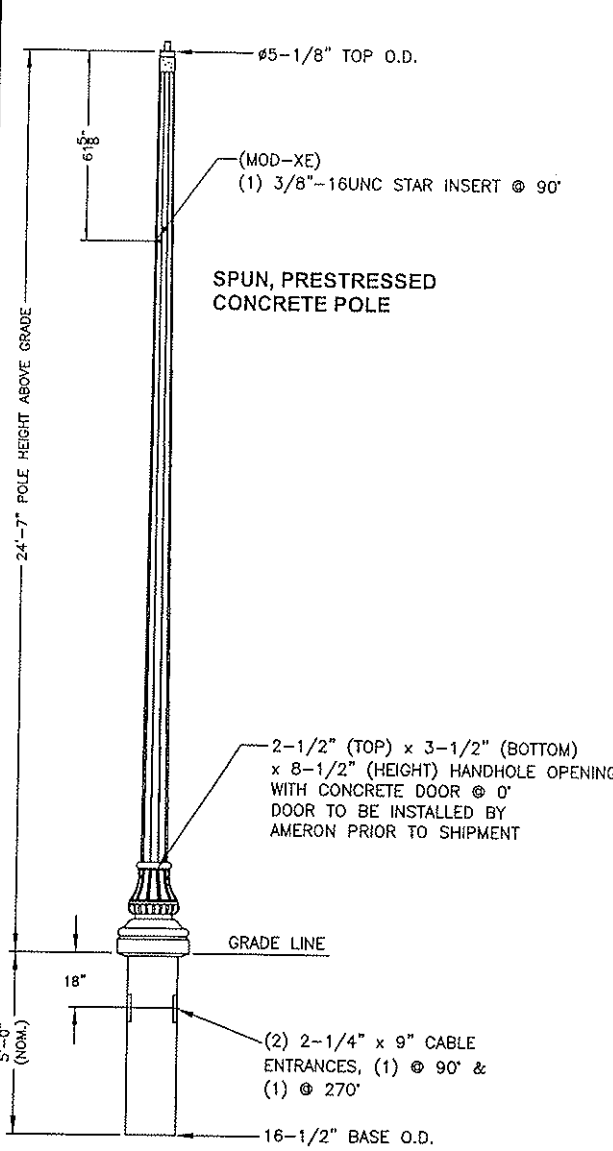


Dwg No:

S16

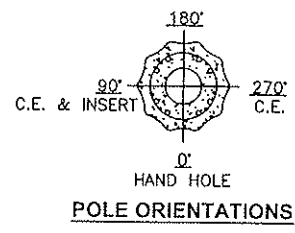
26ET-12 POLE  
WITH TENON

STREET STANDARD DETAIL



**VEWX- TALL EMBEDDED WASHINGTON POLE**

POLE DESIGNATION	POLE HEIGHT A.G.	EMBEDDED DEPTH (NOM.)	POLE OVERALL LENGTH	ABOVE BASE MOMENT (ft.-lbs.)	WEIGHT (lbs.)
VEWX-7.5	24'-7"	5'-0"	29'-7"	24,300	1,500



( ) POLES REQD' EACH W/ GALVANIZED STEEL TENON ASSY. PAINTED S.G. BLACK "PA" (P/N#: 40133EGPAA)

- NOTES:**
- MIX (6P3I): BLACK PEBBLESTONE, EXPOSED AGGREGATE FINISH WITH AMERSHIELD ANTI-GRAFFITI COATING.
  - ASTM C-150 TYPE III GRAY CEMENT.
  - f<sub>c</sub> @ 28 DAYS = 7,000 PSI, USING SPUN CYLINDER TEST.
  - f<sub>c</sub> @ 28 DAYS = 5,000 PSI, USING ASTM C-31 CYLINDER TEST.
  - POLES MANUFACTURED PER ASTM C-1089-97 SPECIFICATIONS.
  - PROTECTIVE COAT EXPOSED P.C. WIRES AT POLE ENDS.
  - MOD-XE: (1) 3/8"-16UNC STAR INSERT.
  - ORDER ENTRY: SPECIFY "C" FOR CONCRETE DOOR.
  - ALL EXPOSED METALS PAINTED S.G. BLACK "PA".

**Ameron POLE PRODUCTS & SYSTEMS**

**BONNEY LAKE -- WA**

**VEWX-7.5 (6P3I) POLE W/ TOP ATTACHMENT**

THIS DOCUMENT CONTAINS INFORMATION WHICH IS PROPRIETARY TO AMERON. IT SHALL NOT BE REPRODUCED, USED OR DISCLOSED TO ANYONE WITHOUT THE PRIOR WRITTEN PERMISSION OF AMERON.

DRAWN: J.C.	5/05	SCALE	DWG. NO.	REV
CHK'D:		N.T.S.	SK052105	B

Approved: 7.14.06  
 City Engineer Date

**STREET STANDARD DETAIL**



Dwg No: **S17**

**VEWX-7.5 (6P3I) POLE W/ TOP ATTACHMENT**

City Of Bonney Lake  
 Weighted Street Light Priority  
 Date: March 23, 2006

Weighted Priority (Sorted)	Location	Criteria / Weight				Weighted Rank (Total)	Final Priority
		1	2	3	4		
		0.4	0.3	0.2	0.1		
1	Myers Rd E & 176th Ave E	4	3			7	
2	Myers Rd E & 81st St E	4	3			7	
3	Sumner Buckley Hwy & Angeline Rd	4	3			7	
4	SR 410 & West City Limit	4	3			7	
5	Sharp Apex on SBH Near Angeline RD		3		1	4	
6	West Tapps Dr E & 56th St E		3			3	
7	West Tapps Hwy & 61st St E		3			3	
8	W Tapps Hwy & 194th Ave E		3			3	
9	Church Lake Dr & 69th St E		3			3	
10	Bonney Lake Blvd & 192nd Ave E		3			3	
11	SR410 & Myers Rd E		3			3	
12	Angeline Rd & SR410		3			3	
13	198th Ave E & 96th St E		3			3	
14	198th Ct E & 198th Ave E		3			3	
15	SR410 & 97th St E		3			3	
16	SR410 & 210th Ave E		3			3	
17	SR410 & 219th Ave Ct E		3			3	
18	SR410 & 221st Ave E		3			3	
19	SR410 & 225th Ave Ct E		3			3	
20	96th St E & 233rd Ave E		3			3	
21	SR410 & 233rd Ave E		3			3	
22	SR410 & 99th St Ct E		3			3	
23	South Prairie Rd & 200th Ave E		3			3	
24	South Prairie Rd & 200th Ave Ct E		3			3	
25	Angeline Rd & 104th St Ct E		3			3	
26	Angeline Rd & 107th St E		3			3	
27	Angeline Rd & 109th St E		3			3	

Weighted Priority (Sorted)	Location	Criteria / Weight				Weighted Rank (Total)	Final Priority
		1	2	3	4		
		0.4	0.3	0.2	0.1		
28	Angeline Rd & 110th St Ct E		3			3	
29	104th St E & 200th Ave Ct E		3			3	
30	111th St E & 192nd Ave E		3			3	
31	SR410 & Sumner Buckley Hwy		3			3	
32	Sumner Buckley Hwy & 182nd Ave E		3			3	
33	Sumner Buckley Hwy & 184th Ave E		3			3	
34	W Tapps Dr E & 56th St E		3			3	
35	197th Ave E & 56th St E			2		2	
36	62nd St E & 182nd Ave E			2		2	
37	62nd St E & 184th Ave E			2		2	
38	62nd St E & 185th Ave E			2		2	
39	65th St E & 193rd Ave E			2		2	
40	65th St E & 194th Ave E			2		2	
41	S Island W Dr & South Vista Dr			2		2	
42	S Vista Dr & Olympic St E			2		2	
43	Cascade Dr E & 205th Ave E			2		2	
44	194th Ave E & 195th Ave E			2		2	
45	182nd Ave E & 74th St E			2		2	
46	75th St E & 194th Ave E			2		2	
47	77th St E & 183rd Ave E			2		2	
48	195th Ave Ct E & 77th St Ct E			2		2	
49	84th St E & 185th Ave E			2		2	
50	82nd St Ct E & 198th Ave Ct E			2		2	
51	199th Ave Ct E & 80th St Ct E			2		2	
52	89th St E & 90th St E			2		2	
53	88th St E & 189th Ave Ct E			2		2	
54	184th Ave E & 95th St E			2		2	
55	202nd Ave E & 204th Ave E			2		2	
56	93rd St E & 205th Ave E			2		2	
57	93rd St E & 206th Ave E			2		2	

Weighted Priority (Sorted)	Location	Criteria / Weight				Weighted Rank (Total)	Final Priority
		1	2	3	4		
		0.4	0.3	0.2	0.1		
58	208th Ave E & 94th St E			2		2	
59	210th Ave E & 94th St E			2		2	
60	96th St E & 203rd Ave E			2		2	
61	96th St E & 204th Ave E			2		2	
62	96th St E & 205th Ave E			2		2	
63	96th St E & 206th Ave E			2		2	
64	96th St E & 205th Ct E			2		2	
65	97th St E & 208th Ave E			2		2	
66	210th Ave E & 97th St E			2		2	
67	97th St E & 97th Ct E			2		2	
68	219th Ave Ct E & 100th St Ct E			2		2	
69	218th Ave Ct E & 101st Ct E			2		2	
70	219th Ave Ct E & 101st Ct E			2		2	
71	109th St Ct E & 189th Ave E			2		2	
72	109th St Ct E & 109th St E			2		2	
73	82nd St Ct E & 199th Ave Ct E			2		2	
74	84th St E & 189th Ave E				1	1	
75	End of 197th Ave E				1	1	
76	End of 184th Ave E				1	1	
77	End of 185th Ave E				1	1	
78	End of 187th Ave E				1	1	
79	End of 197th Ave E				1	1	
80	End of 60th St E				1	1	
81	End of 183rd Ave E				1	1	
82	End of 69th St E				1	1	
83	End of 191st Ave E				1	1	
84	End of 193rd Ave E				1	1	
85	End of 77th St E				1	1	
86	End of 208th Ave E				1	1	
87	End of 210th Ave E				1	1	

Weighted Priority (Sorted)	Location	Criteria / Weight				Weighted Rank (Total)	Final Priority
		1	2	3	4		
		0.4	0.3	0.2	0.1		
88	End of 75th St E				1	1	
89	End of 82nd St E				1	1	
90	End of 81st St E				1	1	
91	End of 184th Ave E				1	1	
92	End of 78th St Ct E				1	1	
93	End of 192nd Ave E				1	1	
94	End of 191st Ave E				1	1	
95	End of 198th Ave Ct E				1	1	
96	End of 80th St Ct E				1	1	
97	End of 180th Ave Ct E				1	1	
98	End of 191st Ave E				1	1	
99	End of 192nd Ave Pl				1	1	
100	End of 183rd Ave E				1	1	
101	End of 184th Ave E				1	1	
102	End of 84th St E				1	1	
103	End of 88th St E				1	1	
104	End of 91st St Ct E				1	1	
105	End of 189th Ave Ct E				1	1	
106	End of 181st Ave E				1	1	
107	End of 94th St E				1	1	
108	End of 96th St E				1	1	
109	End of 97th Ct E				1	1	
110	End of 203rd Ct E				1	1	
111	End of 204th Ct E				1	1	
112	End of 205th Ct E				1	1	
113	End of 211th Ave E				1	1	
114	End of 91st St E				1	1	
115	End of End Tree Rd E				1	1	
116	End of 104th St Ct E				1	1	
117	End of 8th St Ct E				1	1	

Weighted Priority (Sorted)	Location	Criteria / Weight				Weighted Rank (Total)	Final Priority
		1	2	3	4		
		0.4	0.3	0.2	0.1		
118	End of 225th Ave Ct E				1	1	
119	67th Ct E & 194th Ave E				1	1	
120	68th St E & 194th Ave E				1	1	
121	196th Ave E & 96th St E				1	1	
122	96th St E & 198th Ave E				1	1	
123	Sharp apex on 218th Ave Ct E				1	1	
124	217th Ave Ct E & 102nd St Ct E				1	1	
125	218th Ave E & 102nd St Ct E				1	1	
126	64th St E & 207th Ave E	0.4	0.3			0.7	Future
127	Sumner Buckley Hwy & 198th Ave E	0.4	0.3			0.7	Future
128	Sumner Buckley Hwy & Kelly Lake Rd	0.4	0.3			0.7	Future
129	Church Lake Rd E & 196th Ave E			0.2	0.1	0.3	Future
130	W Tapps Hwy & 77th St Ct E		0.3			0.3	Future
131	W Tapps Hwy & Church Lake Rd E		0.3			0.3	Future
132	Kelly Lake Rd & 209th Ave Ct E		0.3			0.3	Future
133	Kelly Lake Rd & 210th Ave E		0.3			0.3	Future
134	214th Ave E & Kelly Lake Rd		0.3			0.3	Future
135	Sumner Buckley Hwy & 203rd Ave E		0.3			0.3	Future
136	Sumner Buckley Hwy & 214th Ave E		0.3			0.3	Future
137	214th Ave E & 91st St E		0.3			0.3	Future
138	Kelly Lake Rd & Church Lake Rd E		0.3			0.3	Future
139	Rhodes Lake Rd E & Angeline Rd		0.3			0.3	Future
140	Rhodes Lake Rd E & 188th Ave Ct E		0.3			0.3	Future
141	Sharp apex on Church Lake Road E		0.3			0.3	Future
142	207th Ave E & 205th Ave E			0.2		0.2	Future
143	203rd Ave & 72nd St E			0.2		0.2	Future
144	82nd St Ct E & 196th Ave E			0.2		0.2	Future
145	204th Ave Ct E & 204th Connect E			0.2		0.2	Future
146	Church Lake Rd E & 204th Connect E			0.2		0.2	Future
147	210th Avenue East & 82nd St E			0.2		0.2	Future



Weighted Priority (Sorted)	Location	Criteria / Weight				Weighted Rank (Total)	Final Priority
		1	2	3	4		
		0.4	0.3	0.2	0.1		
148	End of 77th St Ct E				0.1	0.1	Future
149	204th Connect E				0.1	0.1	Future
150	End of 204th Ave Ct E				0.1	0.1	Future
151	End of 82nd St E				0.1	0.1	Future
152	End of 210th Ave E				0.1	0.1	Future
153	End of 82nd St Ct E				0.1	0.1	Future
154	203rd Ave E & 73rd St E				0.1	0.1	Future
155	73rd St E & 205th Ave E				0.1	0.1	Future
156	72nd St E & 205th Ave E				0.1	0.1	Future
157	83rd St E & 181st Ave E					0	Delete
158	212th Ave E & 83rd St Ct E					0	Delete
159	218th Ave Ct E & 101st St E					0	Delete
160	110th St Ct E & 182nd Ave Pl E					0	Delete
161	110th St Ct E & 183rd Ave Pl E					0	Delete
162	110th St Ct E 184th Ave Pl E					0	Delete
163	Springhaven Way & 210th Ave Ct E					0	Delete
164	End of 188th Ave E					0	Delete
165	End of 69th St Ct E					0	Delete
166	End of 72nd St E					0	Delete
167	End of 75th St					0	Delete
168	End of 76th St E					0	Delete
169	End of 82nd St E					0	Delete
170	End of 186th Ave E					0	Delete
171	End of 94th St E					0	Delete
172	End of 94th St Ct E					0	Delete
173	End of 96th Ct E					0	Delete
174	End of 184th Ave E					0	Delete
175	End of 201st Ave Pl E					0	Delete
176	End of 185th Ave E					0	Delete
177	End of 107th St Ct E					0	Delete

Weighted Priority (Sorted)	Location	Criteria / Weight				Weighted Rank (Total)	Final Priority
		1	2	3	4		
		0.4	0.3	0.2	0.1		
178	End of 108th St Ct E					0	Delete
179	End of 109th St Ct E					0	Delete
180	End of 110th St Ct E					0	Delete
181	End of 111th St Ct E					0	Delete
182	End of 184th Ave Pl E					0	Delete
183	End of 108th St E					0	Delete
184	End of 110th St E					0	Delete
185	End of 111th St E					0	Delete
186	End of 112th St E					0	Delete
187	End of 193rd Ave E					0	Delete
188	70th St E & 181st Ave E					0	Delete
189	Apex on 95th St E					0	Delete
190	Apex on 95th St E					0	Delete

Weighted Priority	Location	Grid #	Circuitry Cost	Wattage	Arm	Notes	SCH	Cost	UMAP	Page #
1	Myers Rd E & 176th Ave E	567990-157949	\$0.00	150	8'	No cost	53P	\$ 12.61	2005E116	12
8	W Tapps Hwy & 67th Ave E	568794-158541	\$0.00	150	4'	No cost	53P	\$ 12.61	2005E081	1
9	Church Lake Dr & 69th St E	568324-158776	\$0.00	150	8'	No cost	53P	\$ 12.61	2005E106	10
23	South Prairie Rd & 200th Ave E	567340-158673	\$0.00	250	8'	Road widening in process	53P		1905E010	28
40	65th St E & 194th Ave E	568461-158448	\$0.00	150	6'	No cost	53P	\$ 12.61	2005E109	9
42	S Vista Dr & Olympic St E	568486-158931	\$0.00	150	8'	No cost	53P	\$ 12.61	2005E088	6
43	Cascade Dr E & 205th Ave E	568635-159006	\$0.00	150	6'	No cost	53P	\$ 12.61	2005E088	6
56	93rd St E & 205th Ave E	567535-158833	\$0.00	150	10'	No cost	53P	\$ 12.61	2005E135	22
57	93rd St E & 206th Ave E	567535-158865	\$0.00	150	10'	No cost	53P	\$ 12.61	2005E135	22
60	96th St E & 203rd Ave E	567428-158779	\$0.00	150	10'	No cost	53P	\$ 12.61	2005E135	22
64	96th St E & 205th Ct E	567414-158880	\$0.00	150	6'	No cost	53P	\$ 12.61	1905E010	28
66	210th Ave E & 97th St E	567378-158995	\$0.00	150	12'	No cost	53P	\$ 12.61	1905E009	29
74	84th St E & 189th Ave E	567822-158331	\$0.00	150	8'	No cost	53P	\$ 12.61	2005E130	18
79	End of 197th Ave E	568468-158646	\$0.00	150	10'	No cost	53P	\$ 12.61	2005E087	5
80	End of 60th St E	568623-159121	\$0.00	150	8'	No cost	53P	\$ 12.61	2005E088	6
82	End of 69th St E	568324-158807	\$0.00	150	6'	No cost	53P	\$ 12.61	2005E106	10
83	End of 191st Ave E	568108-158369	\$0.00	150	4'	No cost	53P	\$ 12.61	2005E112	14
84	End of 193rd Ave E	568101-158460	\$0.00	150	4'	No cost, Comm violation	53P	\$ 12.61	2005E112	14
86	End of 208th Ave E	568082-158961	\$0.00	150	8'	No cost	53P	\$ 12.61	2005E108	16
88	End of 75th St E	568093-159094	\$0.00	150	6'	No cost	53P	\$ 12.61	2005E108	16
98	End of 191st Ave E	567852-158376	\$0.00	150	4'	No cost	53P	\$ 12.61	2005E129	19
100	End of 183rd Ave E	567768-158134	\$0.00	150	6'	No cost	53P	\$ 12.61	2005E130	18
101	End of 184th Ave E	567758-158156	\$0.00	150	4'	No cost	53P	\$ 12.61	2005E130	18
102	End of 84th St E					Not marked on map, where?, See #74			2005E130	18
107	End of 94th St E	567482-158484	\$0.00	150	4'	No cost	53P	\$ 12.61	2005E132	23
113	End of 211th Ave E	567556-159032	\$0.00	150	8'	No cost	53P	\$ 12.61	2005E136	21
114	End of 91st St E	567571-159061	\$0.00	150	6'	No cost	53P	\$ 12.61	2005E136	21
119	67th Ct E & 194th Ave E	568330-158511	\$0.00	150	12'	No cost	53P	\$ 12.61	2005E109	9
120	68th St E & 194th Ave E	568293-158514	\$0.00	150	10'	No cost	53P	\$ 12.61	2005E109	9

**29 Total Streetlights**

**Total Installed Costs**

**\$0.00**

**27 - 150W**

**Total Monthly Costs**

**\$ 340.47**

**1 - 250W**

**1- Unknown**